

MOTOPLASTIC, S.A.

Molí de la sal, 1 - 08403 Granollers (Barcelona) SPAIN

Tel. 34 93 849 06 33 - Fax 34 93 849 09 88

info@puig.tv - info@puigusa.com

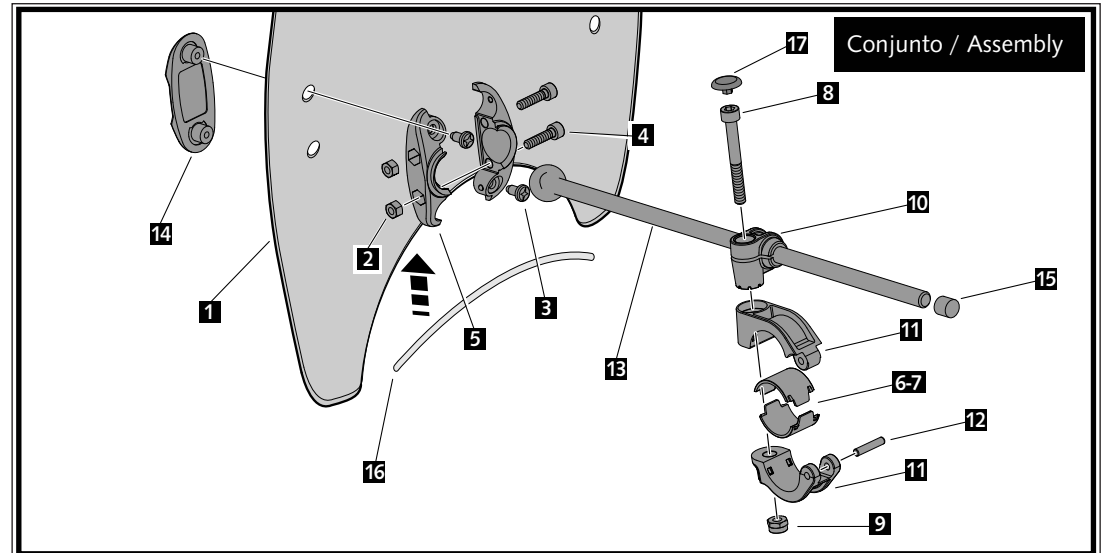
www.puig.tv - www.puigusa.com

| ID. | DESCRIPCIÓN | DESCRIPTION | REF. | QTY. |
|-----|---------------------------------|------------------------------------|-----------------|------|
| 1 | Pantalla | Windshield | I0149H/W | 1 |
| 2 | Tuerca M5 DIN982 | M5 DIN982 nut | TUERCA-D982-746 | 4 |
| 3 | Tornillo phillips M5x13 | M5x13 phillips screw | TORNIP510---233 | 4 |
| 4 | Tornillo M5x20 DIN912 | M5x20 DIN912 screw | TORNI-AD912-464 | 4 |
| 5 | Semibrida rótula tuerca | Semi-clamp ball-joint nut | BRIROT01-I-PR16 | 2 |
| 5 | Semibrida rótula tornillo | Semi-clamp ball-joint screw | BRIROT02-I-PR16 | 2 |
| 6 | Semi-casquillo manillar Ø22mm | Medium-spacer Ø22mm | CAS29-22-0-PR16 | 4 |
| 7 | Semi-casquillo manillar Ø26mm | Medium-spacer Ø26mm | CAS29-26-0-PR16 | 4 |
| 8 | Tornillo M8x50 DIN912 | M8x50 DIN912 screw | TORNI-D912--631 | 2 |
| 9 | Tuerca M8DIN982 | M8 DIN982 nut | TUEA-D985.8-M8- | 2 |
| 10 | Guía varilla | Rod guide | FIXVARLL-0-PR16 | 2 |
| 11 | Brida anterior manillar | Front clamp handlebar | BRIDAANT-0-PR16 | 2 |
| 11 | Brida posterior manillar | Rear clamp handlebar | BRIDAPOS-0-PR16 | 2 |
| 12 | Varilla Dim. 4x20mm Inox | Rod Dim. 4x20mm Inox | VARIL14X20--576 | 2 |
| 13 | Conjunto rótula | Ball bearing set | CJROTULA-0-P200 | 2 |
| 13 | Varilla con rótula Dim. 9x200mm | Rod with ball bearing Dim. 9x200mm | VARILF9X200-591 | 2 |
| 14 | Conjunto soporte | Support set | CONJU-S3PCC-003 | 2 |
| 15 | Tope exterior goma | Rubber outer stop | TOPEE-VPGT--8/4 | 2 |
| 16 | Ribete | Trim | RIBETEHP--900H | 1 |
| 17 | Tapón tornillo M6 DIN912 | M6 DIN912 screw cap | TAPA--CHI1450E | 2 |

INSTRUCCIONES DE MONTAJE - MOUNTING INSTRUCTIONS - MONTAGEANLEITUNG

CARENABRÍS MODELO - WINDSHIELD MODEL - WINDSCHUTZSCHEIBE MODEL CUSTOM II

Ref.: 0336



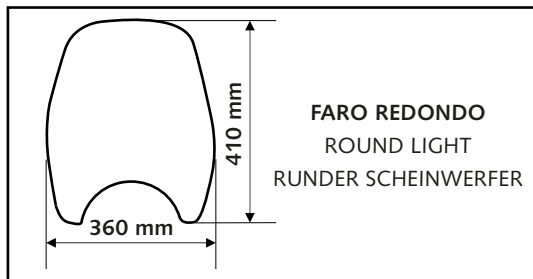
MOTOPLASTIC, S.A.

Molí de la sal, 1 - 08403 Granollers (Barcelona) SPAIN

Tel. 34 93 849 06 33 - Fax 34 93 849 09 88

info@puig.tv - info@puigusa.com

www.puig.tv -



CONSULTAR EN NUESTRA PAGINA WEB LA DISPONIBILIDAD DEL VIDEO DE MONTAJE DE ESTA REFERENCIA / CONSULT OUR WEBSITE THE VIDEO MOUNT AVAILABILITY OF THIS REFERENCE

CARENABRÍS MODELO -
WINDSHIELD MODEL - WINDSCHUTZSCHEIBE MODEL
CUSTOM II

Ref.: 0336

