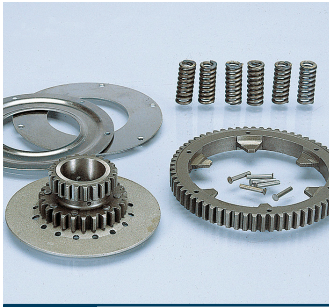


GEARS | INGRANAGGI



**202.0000** Vespa 125 PX,TS Sprint  
Z=23/64 Primary ratio-Primario



**202.0001** Vespa P200E,T5  
Z=23/64 Primary ratio-Primario



**202.1216** Vespa 50 75/90  
Z=24/72 Primary ratio-Primario



**202.1217** Vespa 125, ET3,PK,ETS  
Z=27/69 Primary ratio-Primario



**202.1218** Vespa 50/75  
Z=18/67 Primary ratio-Primario



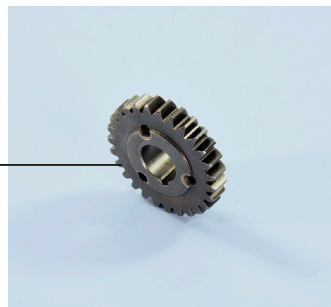
**202.1219** Vespa 75/100  
Z=22/63 Primary ratio-Primario



**202.1220** Vespa 125  
Z=24/61 Primary ratio-Primario



**202.1221** Vespa 50  
Z=24/72 Primary ratio-Primario



**202.1418** Vespa 50 Primary ratio  
Z=25 Primario rapporto lungo



**202.1222** Vespa 125 ET3  
Z=27/69 Primary ratio-Primario



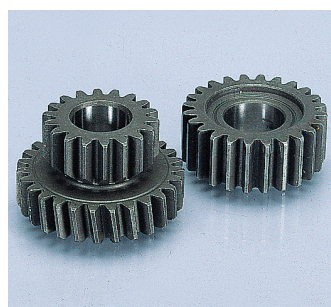
**202.1419** Vespa 125 Primary ratio  
Z=28 Primario rapporto lungo



**202.1420** Vespa 125 Primary ratio  
Z=26 Primario rapporto corto



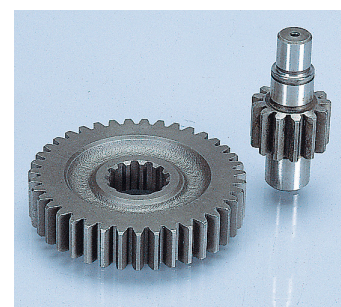
**202.1318** Yamaha CT-Mbk Active  
14/43 Primary ratio-Primario



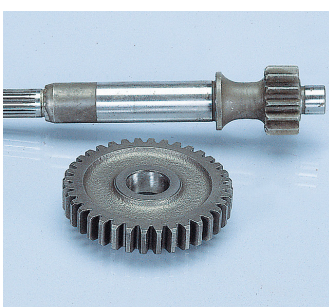
**202.1319** Suzuki CP 50  
Z=18/24 Secondary ratio-Secondario



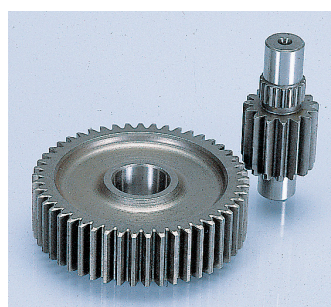
**202.1321** Mbk Booster-Aprilia  
Z=14/41 Secondary ratio-Secondario



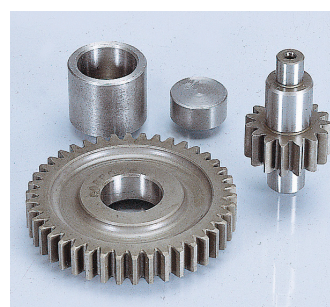
**202.1332** Suzuki Address  
Z=14/40 Secondary ratio-Secondario



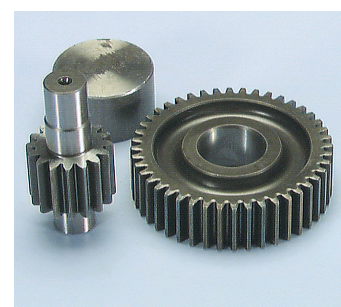
**202.1334** Cagiva City  
Z=17/41 Primary ratio-Primario



**202.1340** Honda Bali  
Z=15/49 Secondary ratio-Secondario



**202.1346** Mbk Booster  
Z=15/42 Secondary ratio-Secondario



**202.1352** Peugeot Buxy  
Z=16/44 Secondary ratio-Secondario

APPLICATIONS TABLE

CYLINDER KITS

MUFFLERS

TRANSMISSIONS

FUEL SYSTEMS

ENGINE SPARE PARTS

SETUP

BLUE LINE

MINIBIKES

HI-SPEED E-BIKE



**202.1366** Derbi Hunter  
Z=15/48 Secondary ratio-Secondario



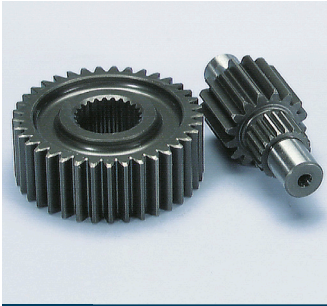
**202.1370** Yamaha-Minarelli  
Z=13/44 Primary ratio-Primario



**202.1373** Piaggio NTT  
Z=14/48 with shaft-con alberino



**202.1378** Piaggio  
Z=13/40 Primary ratio-Primario



**202.1384** Yamaha Majesty 250  
Z=16/36 Secondary ratio-Secondario



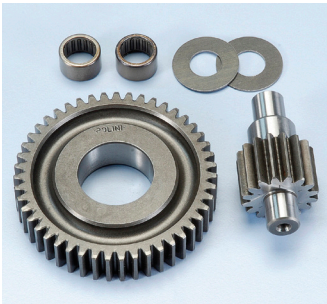
**202.1386** Kymco Dink 125/150 (wheel  
10") Primary ratio-Primario



**202.1389** Piaggio Skipper 125 4Str., Zip 125  
Z=17/44 Leader Primary ratio-Primario



**202.1392** Piaggio Zip SP 2000  
Z=16/37 Primary ratio-Primario



**202.1402** Piaggio with bearing-con cuscinetto  
Z=16/47 1999 - Secondary ratio-Secondario



**202.1404** Piaggio with bearing-con cuscinetto  
Z= 14/48 1999 - Secondary ratio-Secondario



**202.1405** Piaggio Zip SP 2000  
Z=15/38 Primary ratio-Primario



**202.1406** Yamaha Giggle  
Z=16/51 Primary ratio-Primario



**202.1407** Piaggio Zip SP 2000  
Z=14/39 Primary ratio-Primario



**202.1408** Honda SH 125/150i Ø12  
Z=15/39 Secondary ratio-Secondario



**202.1409** Piaggio scooters with flexible coupling,  
Z=14/48 secondary ratio - con parastrappi, secondario



**202.1410** Piaggio Zip SP 2000 Ø27 rear  
wheel pin shaft -perno ruota post



**202.1411** LML Star 200 4Stroke  
Z=23 Primary ratio-Primario



**202.1412** Vespa 125 Primavera 4T  
Z=17/45 Primary ratio-Primario



**202.1413** Vespa GTS 300 4T  
Z=15/49 Primary ratio-Primario



**202.1414** Piaggio Liberty/Vespa 50 4T iGET  
Z=14/43 Secondary ratio-Secondario



**202.1415** Vespa 125/150 4T Euro 3  
Z=16-42 Secondary ratio-Secondario



**202.1416** Vespa 125/150 iGET Euro 4  
Z=16-42 Secondary ratio-Secondario



**202.1417** Vespa 50/125 ET3  
Z=10-14-17-20 Primary ratio-Primario



**202.1421** PGO 50  
Z=14/41 Secondary ratio-Secondario



**202.1424** Vespa 50 iGET EURO 5  
Z=14-43 Secondary ratio-Secondario



**202.1425** Piaggio Ciao - Si  
Z 11 - 23 Primary ratio-Primario



**202.1426** Piaggio Ciao - Si  
Z 10 - 47 Secondary ratio-Secondario



**202.1427** Piaggio Ciao - Si  
Z 11 - 46 Secondary ratio-Secondario

APPLICATIONS TABLE

CYLINDER KITS

MUFFLERS

TRANSMISSIONS

FUEL SYSTEMS

ENGINE SPARE PARTS

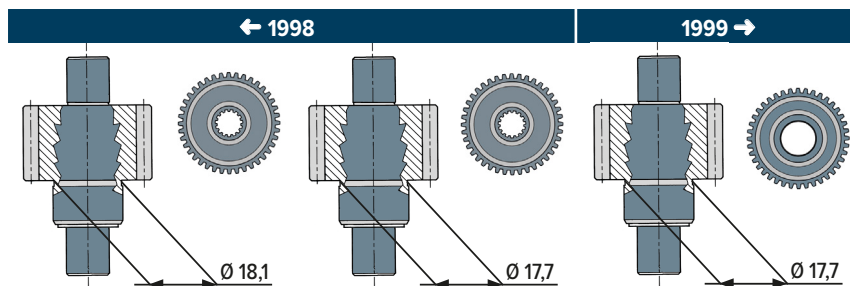
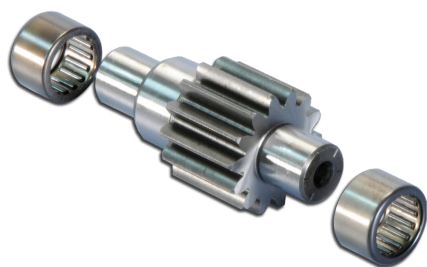
SETUP

BLUE LINE

MINIBIKES

HI-SPEED E-BIKE

**GEAR ASSEMBLY TABLE FOR PIAGGIO - GILERA SCOOTERS**  
TABELLA MONTAGGIO INGRANAGGI SCOOTERS PIAGGIO GILERA



NUMBER OF TEETH	TYPE	CODE	CODE	CODE
Z= 14/48	SECONDARY RATIO - SECONDARIO			<b>202.1404 *</b>
Z= 16/37	SECONDARY RATIO - SECONDARIO			
Z= 16/47	SECONDARY RATIO - SECONDARIO			<b>202.1402 *</b>

\* with bearings - con cuscinetti

## REINFORCED CLUTCH SPRINGS | MOLLE FRIZIONE RINFORZATE



228.0000 Vespa 50/125 ET3



228.0010 Vespa 50/125 ORIGINAL



228.0102 Vespa 50/125 ET3



228.0104 Wave Vespa 50/125 ET3



228.0105 Minarelli AM



228.0130 Piaggio Ciao-Si

## CLUTCH KIT | KIT FRIZIONE



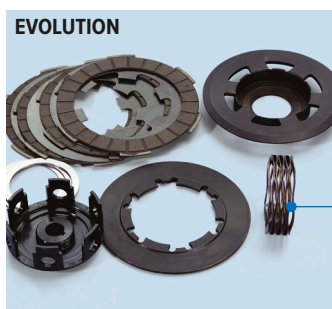
228.0101 Vespa 50/125



230.0400 Vespa 50/125 ET3



230.0401 Vespa 50/125 ET3

230.0502 4 discs Wave spring - molla  
Wave 4 dischi Vespa 50-125 ET3230.0503 4 discs wave spring - molla  
Wave 4 dischi Vespa 50-125 ET3230.0504 Wave spring (no discs) - molla  
Wave (no dischi) Vespa 50-125 ET3

This spring, thanks to its honeycomb structure, grants a perfect flatness of the clutch thrust sides and it can bear loads till 200kg. Polini wave spring is set by the factory to bear 80 kg, that can be modified thanks to the setting shims available in the packaging, that let the variation of the load till 200 kg of thrust. The spring is perfectly placed in the clutch hub prearranged with a proper centering housing.

La molla wave è una spirale di nuova concezione prodotta con tecniche costruttive di alta precisione. Questa molla grazie alla sua struttura ad alveare, garantisce un'ottima planarità sulle facce di spinta della frizione e tollera carichi elevati fino a 200 Kg. Di serie la molla wave Polini è tarata per avere un carico di 80 kg., che può essere modificato grazie a spessori di settaggio disponibili all'interno della confezione, che consentono di variare il carico fino a 200 Kg. di spinta. La molla è perfettamente alloggiata nel mozzo frizione predisposto con apposita sede di centraggio.



CLUTCH DISCS SET | SERIE DISCHI FRIZIONE

**FOR RACE**



**230.0011** Minarelli Am6-Aprilia 50 Rs,Rx

**FOR RACE**



**230.0012** Derbi Senda - GPR

**FOR RACE**



**230.0013** Vespa 50/125

**FOR RACE**



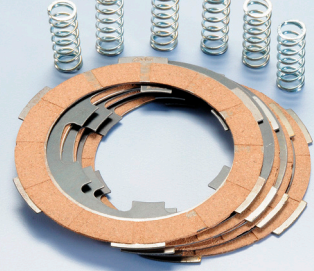
**230.0014** Vespa PE 200 - Racing

**ORIGINAL**



**230.0015** Vespa 50 FL/Ape 50 FL 3

**ORIGINAL**



**230.0016** Vespa 50 FL/Ape 50 FL

**FOR RACE**



**230.0018** Vespa PX 125/150 Racing 6M



**230.0019** Yamaha T-Max 500



**230.0020** Yamaha T-Max 530



**230.0022** Vespa PX-PE 125/200

**EVOLUTION**



**230.0023** Vespa 50/125

**FOR RACE** **NEW!**



**230.0024** Ape 50

**ORIGINAL** **NEW!**



**230.0025** Minarelli AM6

**ORIGINAL** **NEW!**



**230.0026** Derbi Senda

APPLICATIONS TABLE

CYLINDER KITS

MUFFLERS

TRANSMISSIONS

FUEL SYSTEMS

ENGINE SPARE PARTS

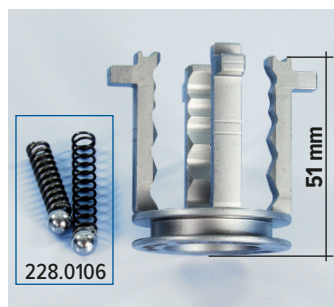
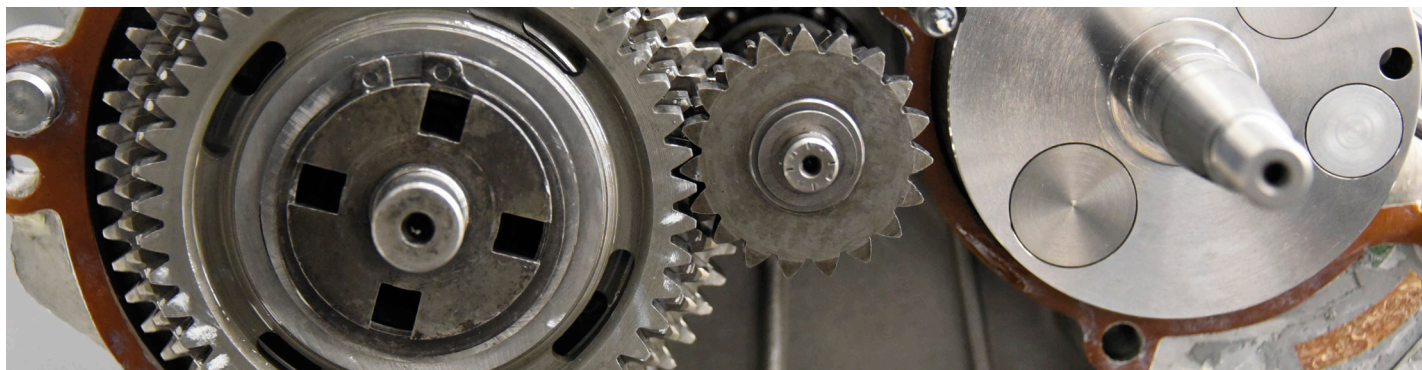
SETUP

BLUE LINE

MINIBIKES

HI-SPEED E-BIKE

## GEAR SELECTOR | CROCIERE CAMBIO



**230.0405** Vespa 50-125 ET3 4 gears  
← 1978



**230.0402** Vespa 50-125 ET3 4 gears  
1979 →

## SQUARE - QUADRATA



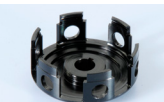
**230.0403** Vespa PX-PE-COSA-T5  
125/150/200

## ROUND - TONDA



**230.0404** Vespa PX-PE-RALLY  
125/150/200

## VESPA PRIMARY GEAR SPARE PARTS | RICAMBI PRIMARIA VESPA



CODE	MODEL	CLUTCH DISCS	FLEXIBLE COUPLING	SPRING	REINFORCED WOODRUFF KEYS	HUB
202.0000	Vespa 125PX-TS-Sprint Veloce		334.0000			
202.0001	Vespa P200E		334.0000			
202.1212 ▲	Vespa 50 Z=21-62				230.0406	
202.1213 ▲	Vespa 125 Z=23-60				230.0406	
202.1214 ▲	Vespa 125 Z=24-58				230.0406	
202.1221	Vespa 50 Z=24-72		334.0001		230.0406	
202.1222	Vespa 125 Z=27-69		334.0001		230.0406	
228.0101	Vespa 50/125			228.0102	230.0406	
230.0500 ▲	Vespa 50/125	230.0013		228.0102	230.0406	
230.0501 ▲	Vespa 50/125			228.0102	230.0406	230.0400
230.0502	Vespa 50/125	230.0013		228.0104	230.0406	230.0400
230.0503	Vespa 50/125	230.0023		228.0104	230.0406	230.0400
230.0504	Vespa 50/125			228.0104	230.0406	

▲ : out of stock - esaurito