



MODEL KAWASAKI Z900
KAWASAKI Z900 A2 (70KW)

LINE SLIP ON

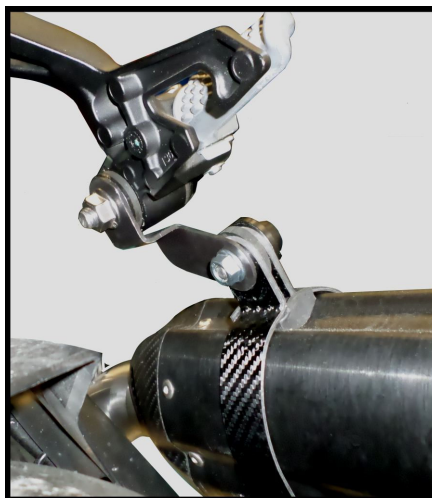
YEAR 2017 - 2019
2017 -->

MUFFLER SUONO

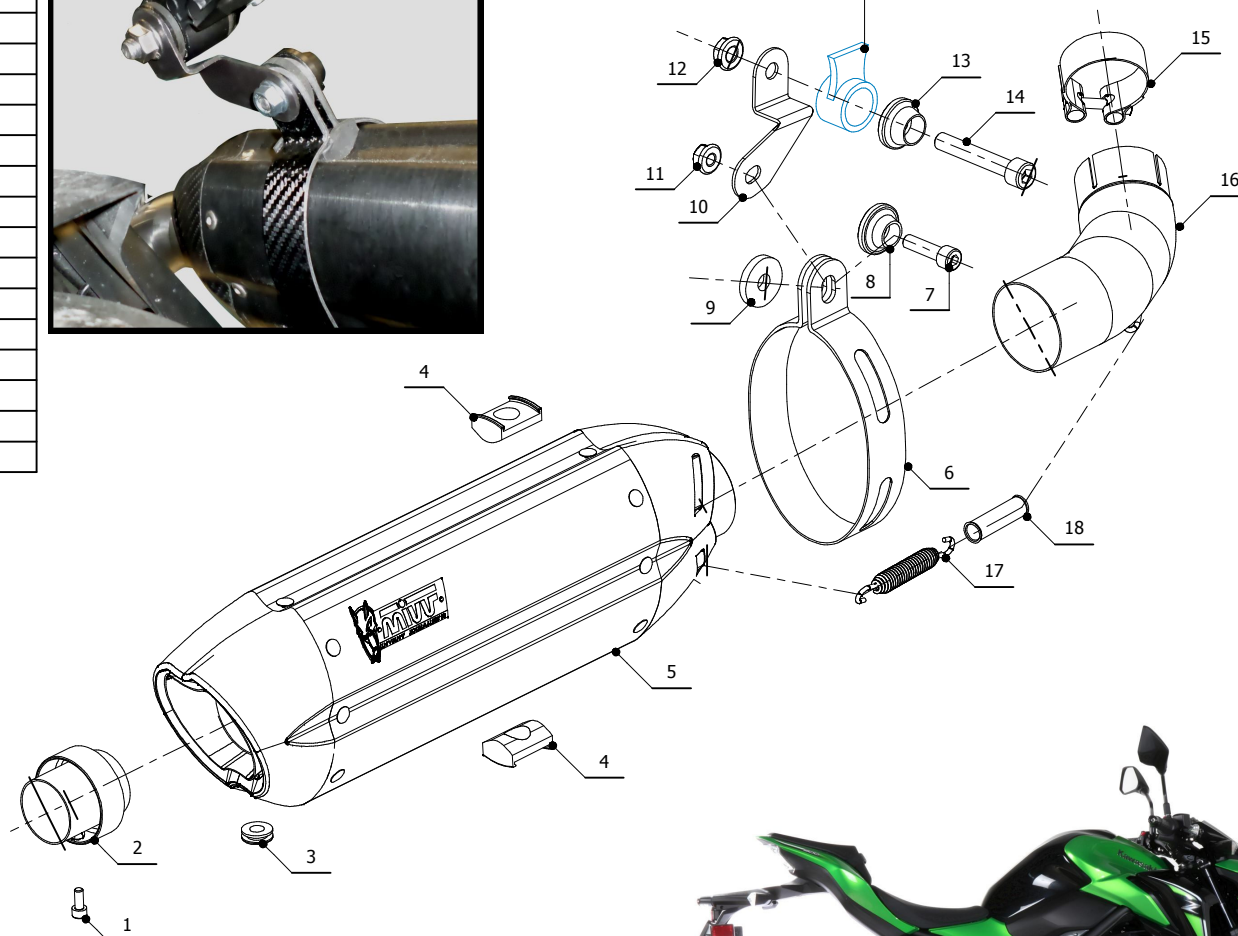
SCHEMATIC

ELENCO PARTI / PARTS LIST

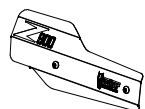
#	QTÀ / QTY	DESCRIZIONE / DESCRIPTION	CODICE / CODE
1	1	Vite M5x12 / Screw M5 x 12	50.73.628.1
2	1	DB killer / DB killer	50.DK.075.0
3	1	Tappo in gomma / Rubber stopper	50.73.266.1
4	2	Tassello grande / Rubber big block	50.73.203.1
5	1	Silenziatore / Muffler	SUONO 270
6	1	Staffa in carbonio / Carbon fiber bracket	50.SS.180.1
7	1	Vite M8x30 / Screw M8x30	50.73.219.1
8	1	Rondella in alluminio nera / Black aluminium washer	50.73.221.1
9	1	Rondella in gomma / Rubber washer	50.73.227.1
10	1	Staffa / Bracket	50.SS.991.0
11	1	Dado M8 flangiato / Flanged nut M8	50.73.393.1
12	1	Dado M10 flangiato / Flanged nut M10	50.73.332.1
13	1	Rondella in alluminio nera / Black aluminium washer	50.73.330.1
14	1	Vite M10x60 / Screw M10x60	50.73.135.1
15	1	Fascetta Ø 48/51 mm / Pipe clamp Ø 48/51 mm	50.FA.007.1
16	1	Tubo di raccordo / Link pipe	9773K045S2
17	1	Molla media / Mid-size spring	50.73.359.1
18	1	Tubo in gomma per molla / Rubber pipe for spring	50.73.210.1



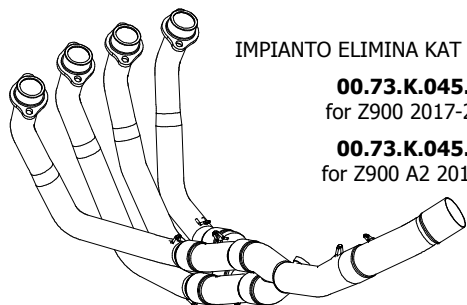
TELAIO / FRAME



PARTI OPZIONALI / OPTIONAL PARTS



COVER IN ACCIAIO / STEEL COVER
50.CR.037.0



IMPIANTO ELIMINA KAT / NO KAT PIPE

00.73.K.045.C1
for Z900 2017-2019

00.73.K.045.C2
for Z900 A2 2017-->

APPLICAZIONI / APPLICATIONS

CODICE / CODE	SILENZIATORE / MUFFLER	TUBO / PIPE	FASCETTA / CLAMP
K.045.L7	INOX (COPPE CARBONIO) / ST. STEEL (CARBON CAPS)	INOX / ST. STEEL	CARBONIO / CARBON FIBER
K.045.L9	STEEL BLACK		

