



Yuasa Fiche de données techniques

Yuasa 6N2A-2C-3 - Conventional 6 Volt batterie

Performance

Tension	6V
Capacity (10-hour)	2Ah
Capacité (20 heures)	2.1Ah

Dimensions (±2mm)

Longueur	70mm
Largeur	47mm
Hauteur	106mm

Poids & Mesures

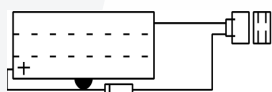
Poids moyen avec acide	0.5kg
Volume d'acide	0.1l

Technologie

Technologie	Cast Sb/Sb
Séparateur	Reinforcing fiber+Glass Fiber



Schéma de montage des éléments



Date de publication: 09/08/2018 - E&OE



Yuasa Technical Data Sheet

Yuasa 6N2A-2C-3 - Conventional 6 Volt Battery

Performance

Voltage	6V
Capacity (10-hour)	2Ah
Capacity (20-hour)	2.1Ah

Dimensions ($\pm 2\text{mm}$)

Length	70mm
Width	47mm
Height	106mm

Weights & Measures

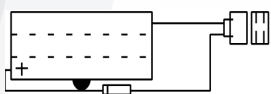
Mean Weight with Acid	0.5kg
Acid Volume	0.1l

Technology

Technology	Cast Sb/Sb
Separator	Reinforcing fiber+Glass Fiber



Cell Assembly Layout



Data Sheet generated on 09/08/2018 - E&OE